

TECHNICAL DATA SHEET

FABX2

TDS03

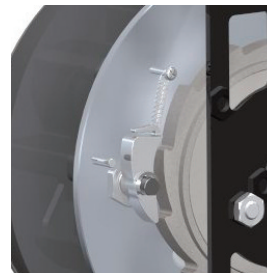


Checkmate FABX2 Fall Arrest Block

The FABX2 is available with galvanised or stainless steel cable, or rope/webbing made with Dyneema®. Up to 20 metres in length the FABX2 offers lightweight handling, excellent serviceability and exceptional performance.

Xcalibre

SAFETY BY DESIGN



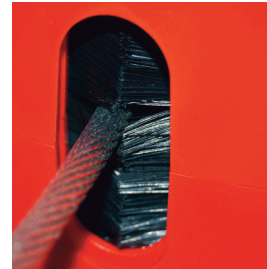
Independent Brake Pawls

The two brake pawls work independently, ensuring that each pawl can engage on its own, providing a fail-safe feature.



Load Bearing Steel Chassis

The internal hot rolled steel chassis provides a structural metallic core beneath the external protective housing.



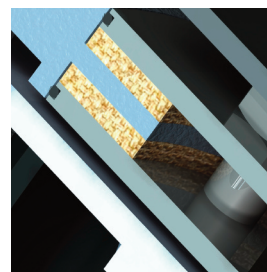
BCS Brush Cleaning System

The entry aperture has a pair of opposing brushes to minimise take up of debris into the device.



Carry Handle Attachments

Optional shoulder strap and carrying handle are available which can be easily fitted to the block.



Sealed Brake Module

The brake module is sealed by the use of "O" rings which stops water & dust ingress affecting the brakes efficiency.



Load Indicator Hook

The swivel hook includes a fall indicator, which clearly shows if the device has been subjected to a shock load.

ordering information

Part No.	Length	Description	Weight
▼ FABX2-18C	18 metres (59ft)	FAB galvanised wire (EN)	6.4kg (14.1lbs)
▼ FABX2A-18C	18 metres (59ft)	FAB galvanised wire (ANSI)	6.4kg (14.1lbs)
▼ FABX2-15CS	15 metres (49ft)	FAB black stainless wire (EN)	6.5kg (14.3lbs)
▼ FABX2A-15CS	15 metres (49ft)	FAB stainless wire (ANSI)	6.5kg (14.3lbs)
▼ FABX2-18F	18 metres (59ft)	FAB rope made with Dyneema® (EN)	5.3kg (11.6lbs)
▼ FABX2A-18F	18 metres (59ft)	FAB rope made with Dyneema® (ANSI)	5.3kg (11.6lbs)
▼ FABX2-20F	20 metres (66ft)	FAB rope made with Dyneema® (EN only)	5.3kg (11.6lbs)
▼ FABX2-12W	12 metres (39ft)	FAB webbing made with Dyneema® (EN)	5.3kg (11.6lbs)
▼ FABX2A-12W	12 metres (39ft)	FAB webbing made with Dyneema® (ANSI)	5.3kg (11.6lbs)

Other lengths also available from 12-20m (40-66ft)

**Powder Coated
Rolled Steel Chassis**

226mm/8.9"

300mm/11.8"



PC ABS Housing

High strength housings give protection to the mechanical assembly

Carry Handle Connections

For fitting of optional carrying handle and/or shoulder strap.

Tactile Rubber Grip

Designed for comfort when performing function test

Alloy Swivel Karabiner With Fall Indicator

Other EN/ANSI connectors available upon request

product features

- ▼ **Anchorage Connection**
11mm alloy twist lock karabiner approved to EN362 & rated to 24kN [EN ONLY] or Steel triple lock approved to ANSI Z359.12 & rated to 52kN
- ▼ **Galvanised Steel Wire Rope**
4.70mm (nom) dia. 19 x 7 minimum breaking load 15kN
- ▼ **Stainless Steel Wire Rope**
5mm dia. 7 x 19 minimum breaking load 15kN
- ▼ **Webbing made with Dyneema®**
20mm x 1.4mm min. breaking load 22kN
- ▼ **Fibre Rope made with Dyneema®**
5mm dia. min. breaking load 27kN
- ▼ **Capacity**
Wire: 18m(59ft) Fibre Rope: 20m(66ft)
Webbing: 12m(39ft)
Other lengths 12-20m available
- ▼ **6kN maximum arresting force**
Wire rope = 4.5kN (nom) Webbing = 4kN (nom)
Rope = 3.5kN (nom)
- ▼ **Total Arrest distance**
Max 2.0m [EN] / 54" [ANSI]
- ▼ **User Weight**
136kg (300lbs) maximum

Dyneema® and Dyneema®, the world's strongest fiber™ are trademarks of DSM. Use of these trademarks is prohibited unless strictly authorized

principal materials

- ▼ **External Housings**
PC/ABS High strength and rigidity UV stabilised
- ▼ **Drum**
Polyamide 6 Glass Filled
- ▼ **Chassis**
Hot Rolled Steel, Zinc plated black
- ▼ **Pawl Plate & Ratchet**
Al Alloy T6 Hard anodised
- ▼ **Pawls & Spindles**
Stainless steel, hardened
- ▼ **Bearings**
Polyamide with PTFE
- ▼ **Shaft**
Al. Alloy T6 Hard anodised
- ▼ **All Fixings**
Stainless steel
- ▼ **Swivel Hook**
Al. Alloy, Rated to ANSI

standards

- ▼ EN 360, AS/NZS 1891.3:1997 [EN]
- ▼ ANSI Z359.14:2012 Class B
- ▼ OSHA 1910 & 1926 [ANSI]



CHECKUSOUT

www.checkmateuk.com **CHECKMATE**

